

**V-1**  
 HORIZ. INLET SEPARATOR  
 SIZE: 30" DIA. x 90' S/S  
 MAINT. 245 PSIG @ 250°F  
 MOUNT. 20" @ 245 PSIG  
 C.W. 150 PSIG  
 WEIGHT (LBS): 300

**V-3**  
 LIQUID TRANSFER VESSEL  
 SIZE: 16" DIA. x 36' S/S  
 MAINT. 450 PSIG @ 250°F  
 MOUNT. 20" @ 250°F  
 C.W. 150 PSIG  
 WEIGHT (LBS): 425

**C-1**  
 GAS COMPRESSOR  
 MANUFACTURER: FROCK  
 MODEL: X-151M  
 MOTOR SPEED: 1775  
 MAX. PS. (PSIG): 450  
 C.W. (PSIG): 150  
 WEIGHT (LBS): 1185

**V-2**  
 VERT. OIL SEPARATOR  
 SIZE: 12 3/4" DIA. x 63 1/4" S/S  
 MAINT. 450 PSIG @ 250°F  
 MOUNT. 20" @ 450 PSIG  
 C.W. 150 PSIG  
 WEIGHT (LBS): 801

**NET/SW PIPE WT CHART**

PIPE SPECIFICATION	AA	BA	CA	SA	SS	CS
1/2"	80	80	160	200	180	200
3/4"	80	80	160	200	180	200
1"	80	80	160	200	180	200
1 1/2"	80	80	160	200	180	200
2"	80	80	160	200	180	200

**GENERAL NOTES**

1. ALL PIPING SYSTEMS (INLET OR THROUGH) TO COMPLY WITH CONCEPT E313.3 EDITION
2. ALL WELDS TO BE WITNESSED TO E313 STANDARDS
3. LEAK TESTS TO BE PERFORMED AS PER CONCEPT'S PRACTICES
4. SPANWIDS REFER TO SPEC. FOR START SHEET FOR MORE DETAIL
5. ALL INSTRUMENTS AND PIPING TO BE WITNESSED TO E313 STANDARDS
6. INSTRUMENTATION SHEET WIRING TO BE 2 CONDUCTORS, TYPICAL, PER CONCEPT TYPE 25 US GA.
7. ELECTRICAL CLASSIFICATION CLASS 1, ZONE 2, GROUP B, DIV. 2, TUBING TO BE PERMANENTLY TESTED IN ACCORDANCE WITH E313.3 STANDARDS
8. SEE W/P/S PIPE WT CHART FOR WELDS/PIPE READING
9. TO OBTAIN W/P/S READING ON ALL PROCESS PIPING & VESSELS
10. TO OBTAIN W/P/S READING ON ALL INSTRUMENTATION PIPING
11. (2) TUBING REDUCTION TO BE WITNESSED AT ALL ACCESSIBLE HEIGHT AND LOCATION
12. USE GRAFTE FROM FROM 12 ON COMPRESSOR

**NOTES**

1. N/A
2. RI-ON SHOWN OPEN CONTACTS FOR 60 SECONDS, THEN CLOSE CONTACTS
3. RI-ON VALVES ARE MOUNTED SUCH THAT THE OUTLET IS SET OPEN OR AT A HIGHER ELEV. TO THE FLARE HEADER
4. INSTRUMENT SYMBOLS SHOWN WITH FROM COMPRESSOR
5. USE GRAFTE FROM FROM 12 ON COMPRESSOR

**REVISIONS**

NO.	DESCRIPTION	DATE	BY	APPD.
10	REVISED AS PER SIZE	JUN 28/10	R.P.	
9	AS-BUILT	JUN 11/10	R.P.	
8	REVISED V-3 DESIGN LINE	JUN 04/10	R.P.	
7	ADDED FE-100	DEC 23/09	R.P.	
6	REVISED AS PER SIZE	DEC 18/09	R.P.	
5	UPGRADE FOR ENGINEER APPROVAL	DEC 18/09	R.P.	
4	UPGRADE AS PER SIZE/CLIENT	DEC 14/09	R.P.	

**FRACK/125HP RELINQCE**  
 NCC  
 16954



CONOCO PHILLIPS  
 S125E SOUR UNIT  
 LSD: 11-08-46-13 WSM  
 100670-101

**H-1**  
**BUILDING HEATER**  
 MANUFACTURER: HAZCO  
 MODEL: 201-12-100-40350-1-1-A  
 TYPE: 1/2" DPL. ROOF  
 RATED HP/RT: 34000  
 VOLTAGE: 480V/3P/60HZ  
 WEIGHT (LBS): 135

**CP-1**  
**CONTROL PANEL**  
 MANUFACTURER: MURPHY  
 MODEL: TM-48-1  
 AMPLIMOTOR

**BF-1**  
**BUILDING EXHAUST FAN**  
 MAKE: BENTON  
 MODEL: ET-20-3  
 RATED: 4700 CFM  
 MOTOR: 1/2 HP DPL. ROOF  
 POWER: 120V/1/60HZ

**E-1**  
**OIL COOLER**  
 MODEL: FC-502-50  
 MAKE: FERRIS  
 SURFACE AREA (SQ. FT.): 18.4  
 DRY WEIGHT (LBS.): 19

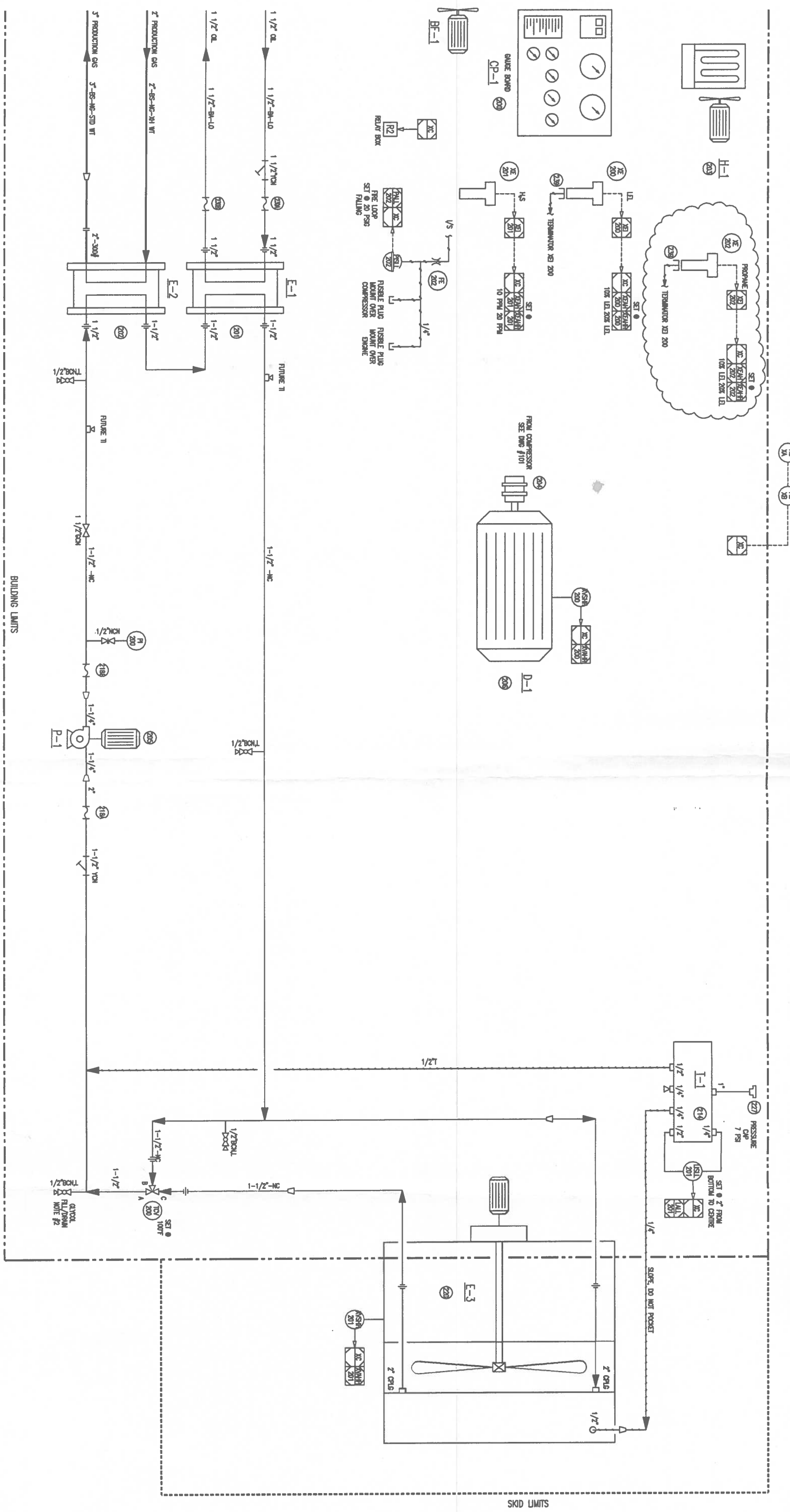
**E-2**  
**GAS COOLER**  
 MODEL: FV-1000A-24  
 MAKE: FERRIS  
 SURFACE AREA (SQ. FT.): 28.8  
 DRY WEIGHT (LBS.): 38

**D-1**  
**MOTOR**  
 MANUFACTURER: BURNS-ROUNDE  
 MAKE/MODEL: 125 HP/230V410T-4  
 ENCLOSURE/FRAME: TEC/444-1  
 VOLTAGE: 480V/3P/60HZ  
 DESIGN: F-INSULATION, B-RSE  
 WEIGHT (LBS.): 1797

**P-1**  
**COOLANT PUMP**  
 MAKE: GRUNDFOSS  
 MODEL: P2-80/2  
 MOTOR: 1/2 HP IM3  
 VOLTAGE: 480V/3P/60HZ  
 WEIGHT (LBS.): 50

**I-1**  
**SURGE TANK**  
 SERVICE: GLOCO  
 VOLUME: 5.5 GALLONS  
 6"x6"x20"

**E-3**  
**AIR COOLER**  
 MANUFACTURER: AM-X  
 MODEL: 36 V1  
 SERVICE: E-COOL  
 FAN TYPE: MOORE 1100  
 FAN SPEED (RPM): 1125  
 FAN VOLTAGE (V): 240  
 DRY WEIGHT (LBS.): 1000



**NPT/SW PIPE WT CHART**

PIPE SPECIFICATION	NA	BA	CA	SA	CS
1/2"	80	160	200	200	200
3/4"	80	160	160	160	200
1"	80	160	160	160	200
1 1/4"	80	160	160	160	200
1 1/2"	80	160	160	160	200
2"	80	160	160	160	200

**GENERAL NOTES**

**NOTES**  
 1. N/A  
 2. LOWEST POINT ON SYSTEM

**BUILDING LIMITS**

REV.	DESCRIPTION	DATE	BY	APP'D
3	REVISED AS-FRI SAGE	JUN 28/10	R.B.	
2	AS-BUILT	JUN 11/10	R.B.	
1	UPDATE AS-FRI SAGE	MAY 12/09	T.K.	
0	ISSUED FOR CONSTRUCTION	OCT 18/09	T.K.	
A	ISSUED FOR REVIEW	OCT 14/09	T.K.	
F	UPDATE APPROX/START & FUEL GAS DESIGNS	JUN 29/09	T.K.	

REV.	DESCRIPTION	DATE	BY	APP'D
1	ISSUED FOR REVIEW	OCT 14/09	T.K.	

**FRICK/125HP RELIANCE**  
 JOB # 16954

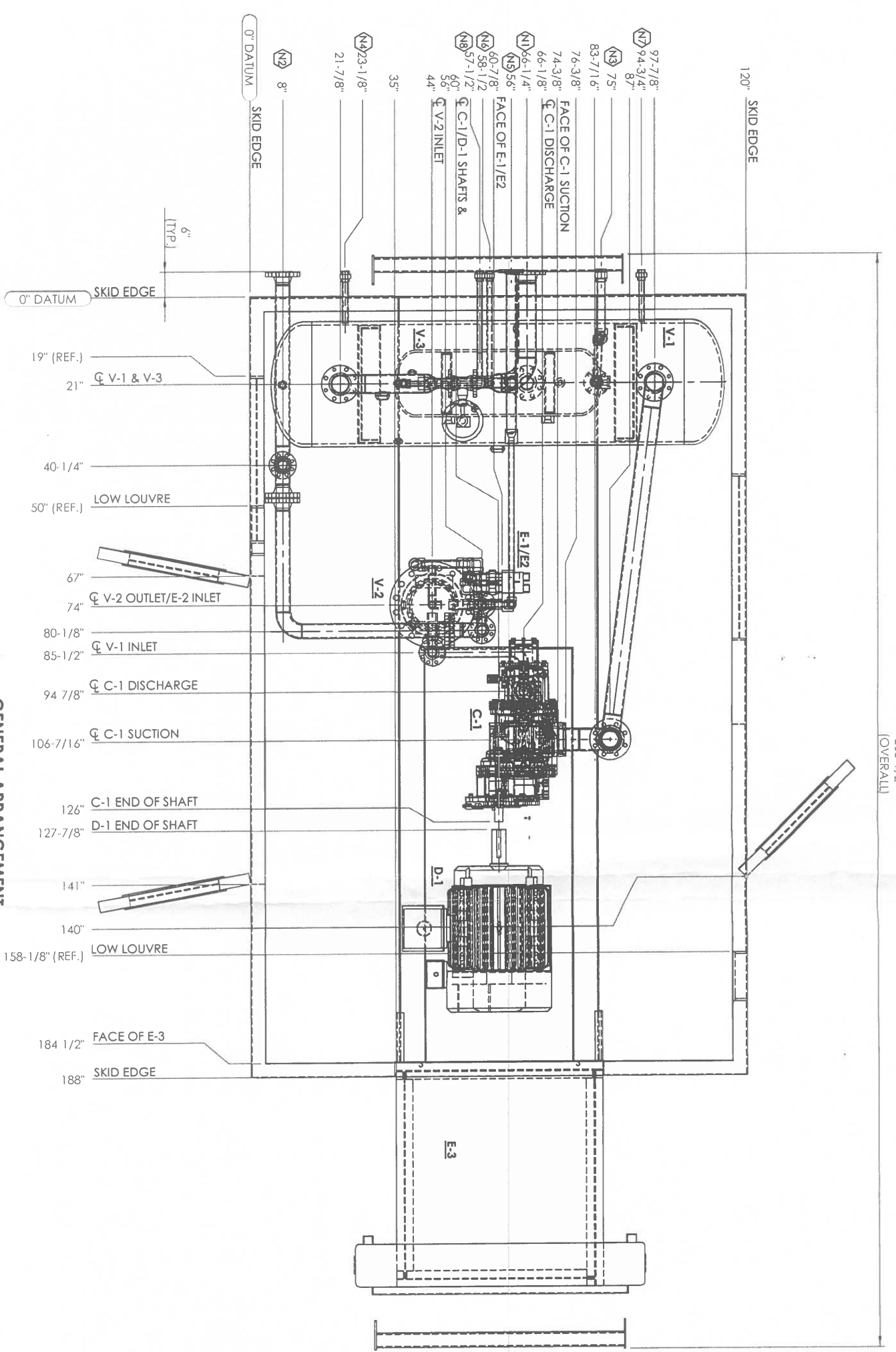
**PAID**  
 FRICK/125HP RELIANCE

**CONOCO PHILLIPS**  
 S125E SOUR UNIT  
 LSD: 11-08-46-13 WSM

100670-102

MARK	SERVICE	SIZE	RATING	TYPE
N1	GAS INLET	4"	150#	RFWN
N2	GAS OUTLET	3"		RFWN
N3	DRAIN	1-1/2"		NPT
N4	I/A VENT	1"		NPT
N5	FLARE HEADER	2"		RF HUB
N6	PROPANE INSTR. & PURGE GAS SUPPLY	1"		NPT
N7	INSTRUMENT AIR	1"		NPT
N8	LP LIQUID DRAIN	1"		NPT

OFFENDING COMMAND: 3RQ61Z12e7DIG0:2PZX#N-ul#tCUNkW+S+kBJP  
 STACK: --dict--  
 ERROR: undefined



**GENERAL ARRANGEMENT  
 PLAN VIEW**  
 SCALE: 1:30

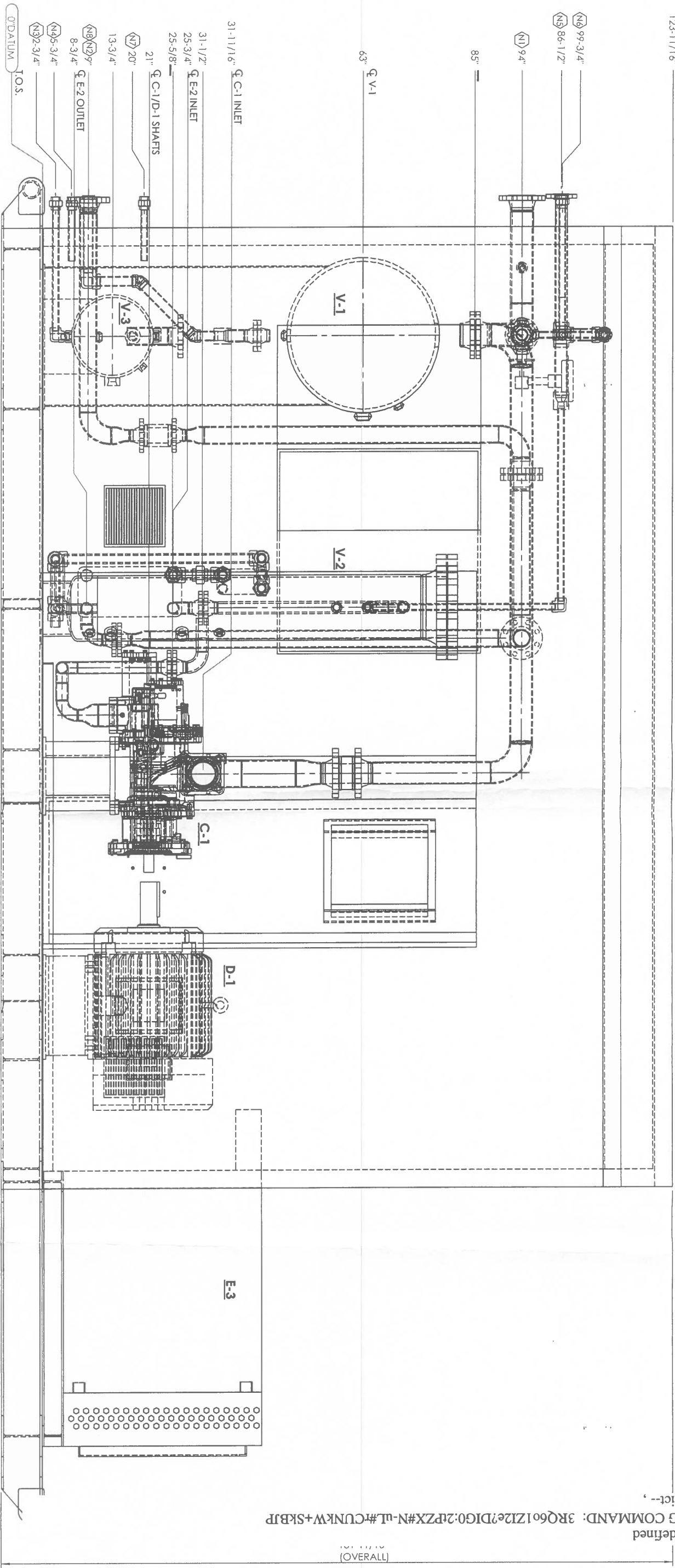
- GENERAL NOTES:**
1. ALL DIMENSIONS ARE IN INCHES, UNLESS SPECIFIED WITHIN (mm)
  2. ALL PIPING & TUBING TO BE SUPPORTED AS REQUIRED
  3. SHIPPING WEIGHT (LBS) IS APPROX.
  4. ROOF VENTS TO BE REMOVED AND PLACED IN SKID FOR SHIPPING
  5. SURFACE PREP: a) PRIMER: SELF PRIMING PAINT, SEE BELOW  
 b) PAINT: 1 S/C GENERAL PAINT 16010, SELF PRIMING PAINT, GLOSS URETHANE ENAMEL, SAGE TAN

REV	DESCRIPTION	DATE	BY:	APPR.	PACKAGER	JOB NO.	REF NO.	DRAWN BY:	DATE	CHECKED BY:	DATE	DWG. NO.:	REV:
2	AS BUILT	JAN 11/10	RJP	GA	16954								2
1	ADDED CONNECTIONS N3,N4,N5,N6,N8	DEC 03/09	RJP	GA									
0	ISSUED FOR CONSTRUCTION	OCT 28/09	RJP	GA									
A	ISSUED FOR INFORMATION	OCT 19/09	RJP	GA									

**TITLE:** GENERAL ARRANGEMENT  
**5125E SOUR UNIT**  
**COMP: FRICK XJF-151M**  
**MOTOR: 444T**

**CONOCO PHILLIPS**  
 CANADA  
 BRAZEAU  
 LSD: 11-08-46-13 WSM

123-11/16" BUILDING HIGH SIDE



GENERAL ARRANGEMENT  
 ELEVATION VIEW  
 SCALE: 1:20

GENERAL NOTES:

1. ALL DIMENSIONS ARE IN INCHES, UNLESS SPECIFIED WITHIN (mm)
2. ALL PIPING & TUBING TO BE SUPPORTED AS REQUIRED
3. SHIPPING WEIGHT (LBS) IS APPROX.
4. ROOF VENTS TO BE REMOVED AND PLACED IN SKID FOR SHIPPING
5. SURFACE PREP: a) PRIMER: SELF PRIMING PAINT, SEE BELOW  
 b) PAINT: 1 5/8" GENERAL PAINT 16010, SELF PRIMING PAINT, GLOSS URETHANE ENAMEL, SAGE TAN

STAMPS:

REV	DESCRIPTION	DATE	BY:	APPR.	TITLE	END USER:
1	AS-BUILT	JAN 11/10	RIP	GA	GENERAL ARRANGEMENT	CONOCO PHILLIPS
0	ISSUED FOR CONSTRUCTION	OCT 28/09	RIP	GA	125SE SOUR UNIT	CANADA
A	ISSUED FOR INFORMATION	OCT 19/09	RIP	GA	COMP.: FRICK XJF-151M	BRAZEAU
					MOTOR: 4441	W5M
					PACKAGER: 16954	
					REF NO.: S125E	
					DRAWN BY: DATE: OCT 19/09	
					CHECKED BY: DATE: OCT 19/09	
					DWG. NO.: 100670-202	
					REV: 1	

ERROR: undefined  
 OFFENDING COMMAND: 3RQ601Z12e?DIG0:2tPZX#N-ul#CUNKW+W+SKBJP  
 STACK: --dict--

(OVERALL)