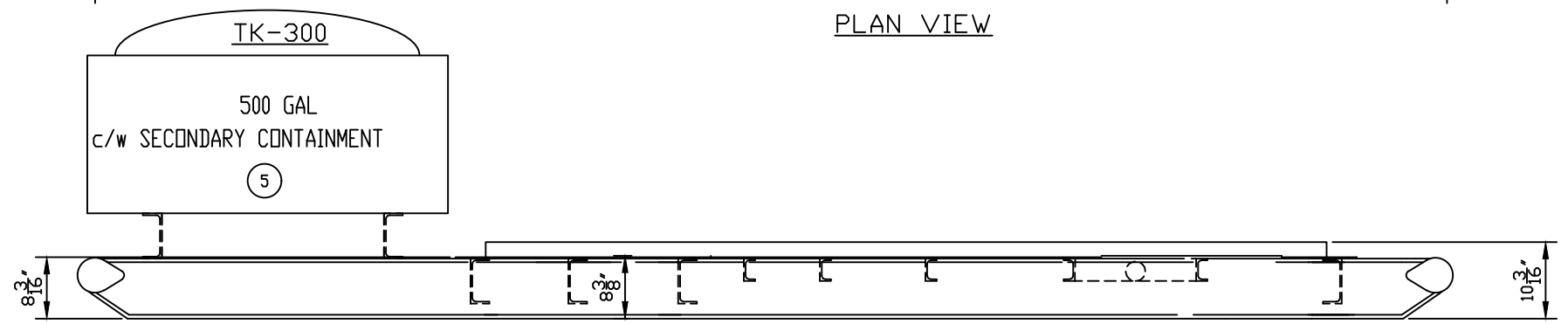
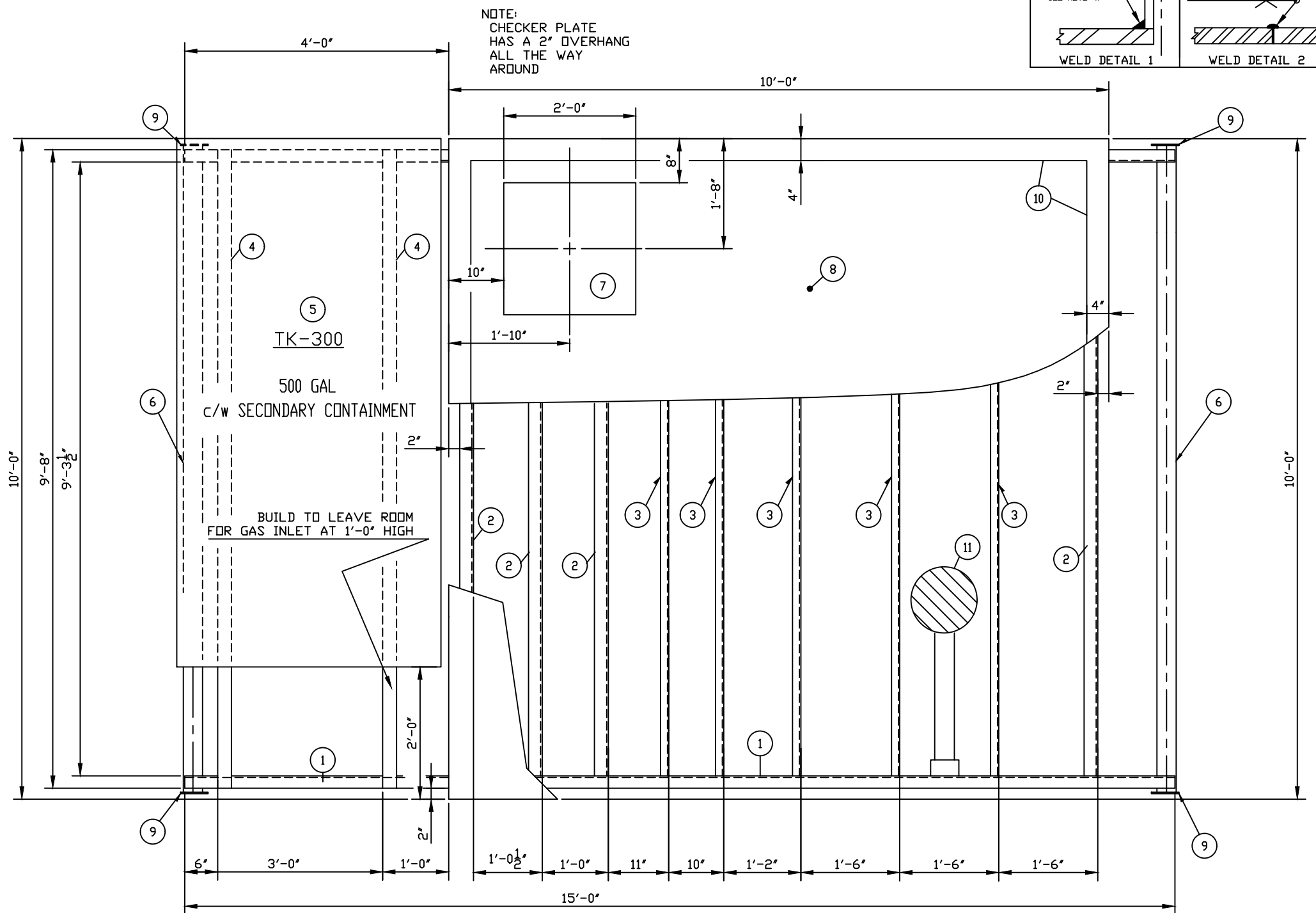


BILL OF MATERIALS

MARK	QTY.	DESCRIPTION
1	2	C8 x 11.5# x 15'-0" LONG
2	4	C6 x 8.2# x 9'-3 1/2" LONG
3	5	C4 x 5.4# x 9'-3 1/2" LONG
4	2	C6 x 8.2# x 9'-8" LONG
5	1	500 GAL STEEL SECONDARY CONTAINMENT
6	2	PIPE: 3"Ø 0.254" WALL x 10'-4" LONG
7	1	PLATE: 3/8" x 2'-0" x 2'-0"
8	1	CH. PL: 3/16" x 10'-0" x 10'-0"
9	4	PLATE: 5' x 7' x 3/8"-LASER CUT END ROLL PLATES
10	34'	FLAT BAR: 1/4" THK x 2" WD x 38'-0" LONG C.T.S.
11	1	STD. IPS 12"Ø DRAIN c/w 2" BALL VALVE

NOTE:
JOB NUMBER TO BE
WELDED TO SKID



- NOTE:
- 1) SHOP TO LOCATE CHANNELS AT CHECKER PLATE SEAMS
 - 2) DISTANCE BETWEEN INSIDES OF CHANNELS MAY VARY FROM GIVEN DIMENSIONS, BUT MAY NOT EXCEED 1'-5" INSIDE TO INSIDE OF MEMBERS
 - 3) ALL STEEL MINIMUM SA-36
 - 4) FILLET WELDS AROUND BASE PLATES ARE 3/8" ALL OTHER FILLETS ARE 1/4"
 - 5) ALL C4x5.4# WELDS ARE FILLET WELDS, ALL CHECKER PLATE SEAMS ARE WELD DETAIL #2.
 - 6) DIMENSIONS FEET AND INCHES
 - 7) 1-1/2" THK SPRAY FOAM INSULATION ON UNDERSIDE.
 - 8) TO HAVE 2" HIGH DRIP LIP AROUND CHECKER
 - 9) TO HAVE STD. IPS 12"Ø DRAIN WITH 2" BALL VALVE

REV. #	REVISION	BY	APPR	DATE
1	AS BUILT	PP		04-02-18
0	ISSUED FOR CONSTRUCTION	LG		03-12-24
A	ISSUED FOR APPROVAL	PP		03-12-08



DATE 03-12-08	CLIENT CONOCOPHILLIPS CANADA c/o EQUINOX ENGINEERING
DESIGNED BY IPS	TITLE 15'-0" x 10'-0" SKID BASE DRAWING FOR A 16" VERTICAL SEPARATOR c/w A 10'-0" x 10'-0" BLDG.
DRAWN BY P. PIOT	PROJECT NO. 2347-001SKD
CHECKED BY	REFERENCE NO.
APPROVED BY	FILENAME 2347-001SKD
SCALE N.T.S.	SHEET NO. 1 OF 1
	DRAWING NO. CCL-2347-001S
	REV. NO. 1